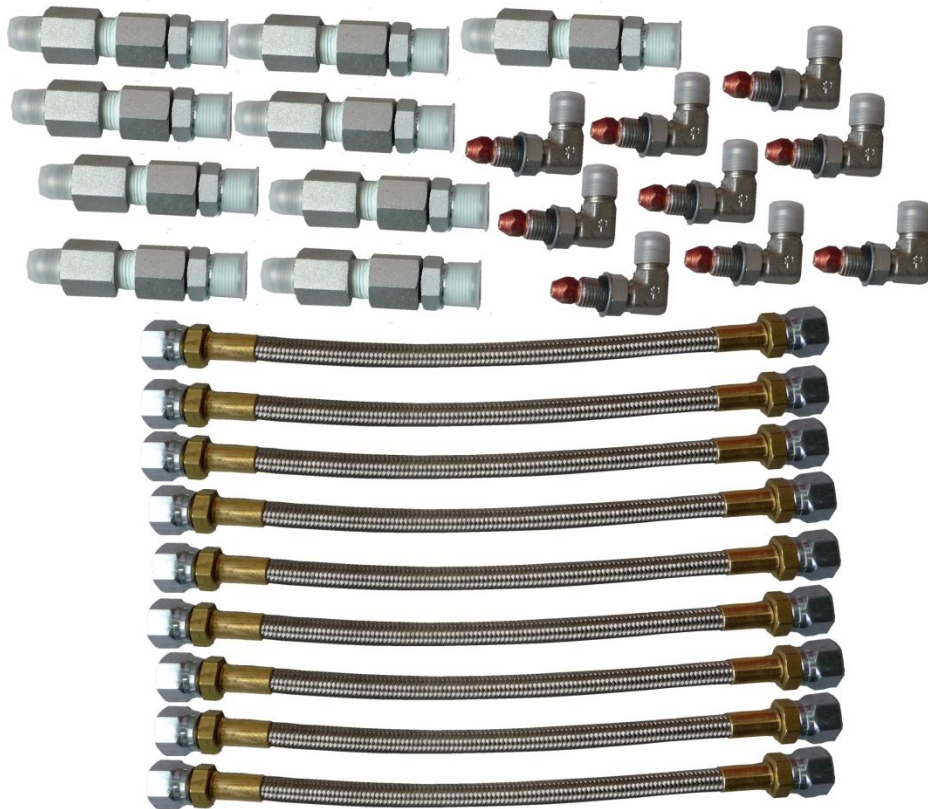

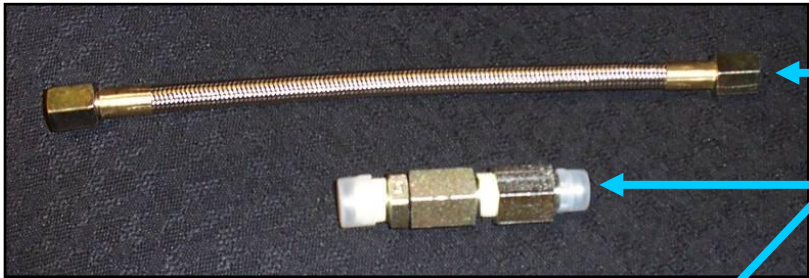
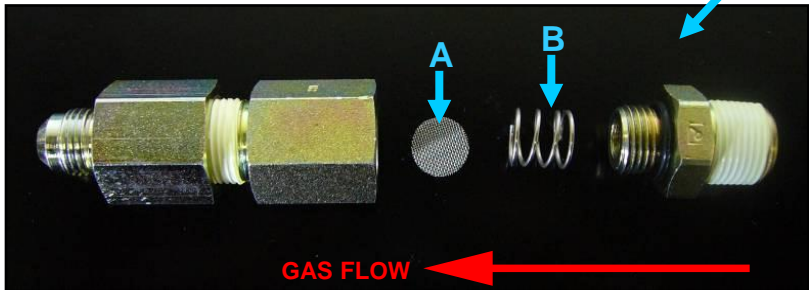



StreetHeat SR-60

Upgrade Kit Installation Instructions



The IR Heater Upgrade Kit includes a set of **In-Line Filter Assemblies** to filter out debris which can cause blockage of the heater nozzles, and a set of **Smaller Nozzle Assemblies** to improve combustion efficiency and improve high wind performance.

	<u>Kit Contents:</u>
Locking Nut	9 pieces - Small Nozzle and Elbow Assemblies
	9 pieces - 11" Teflon lined Braided Stainless Steel Hoses
9 pieces - In-Line Filter Assemblies	
	<u>Filter Assembly Detail:</u>
A fine mesh stainless steel disc (A) is held in place by a spring retainer (B)	
	<u>Installation:</u>
	1. Remove the existing braided hoses or stainless steel tubes between the manifold and the heaters

2. Note: It is easier to replace the Nozzle assemblies if the wing heaters are removed from their frame. The center heaters can remain attached.

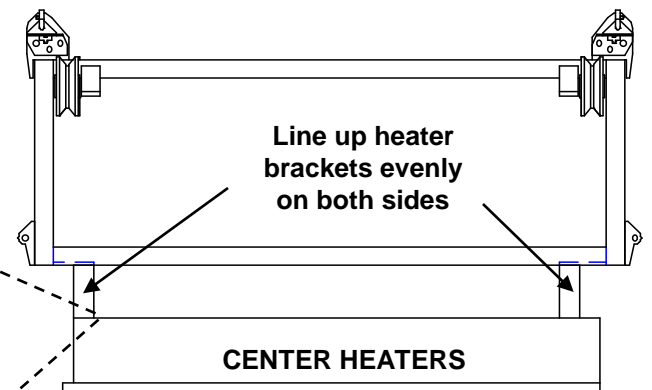
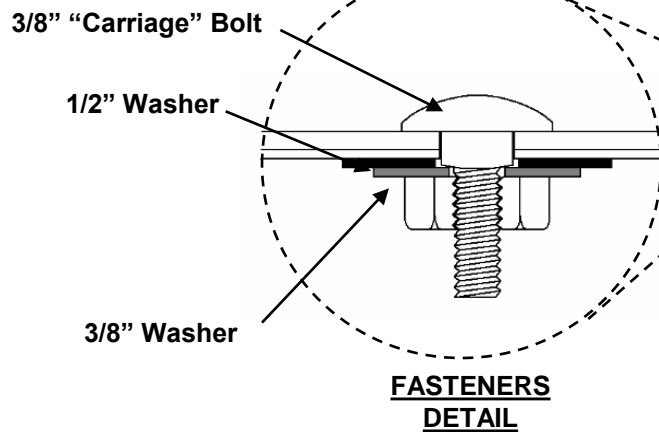


3. Use an 11/16" wrench to loosen the locking nut on the large nozzle assembly installed in the heater.



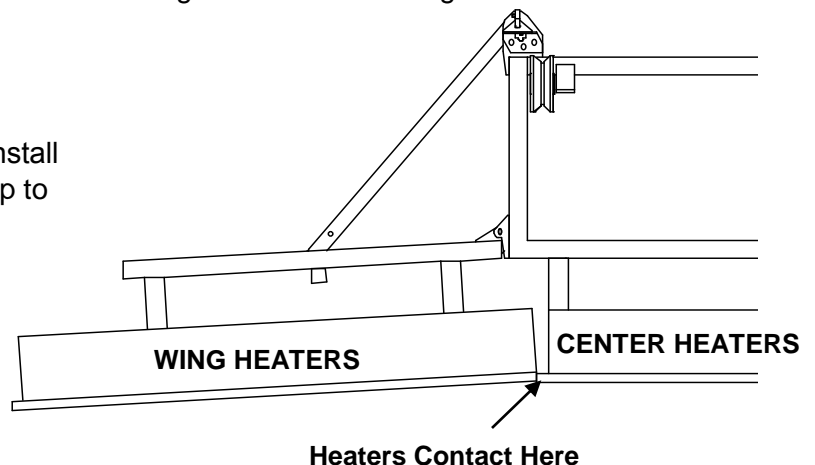
4. Unscrew the whole assembly from the mounting bracket. Replace with the Small Nozzle Assemblies and tighten the locking nut.

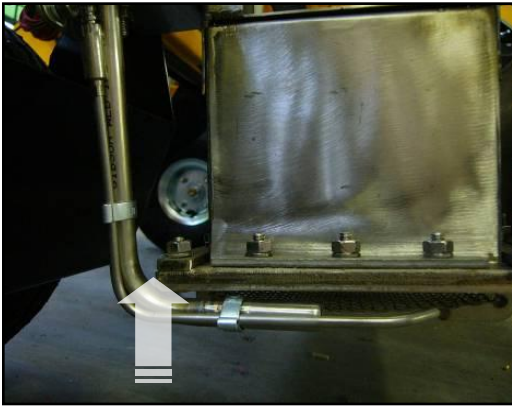
5. Reinstalling the heaters (if they were removed):



5a. If the Center Bank heaters were removed, reinstall these heaters first. Center the heaters and install bolts, washers and nuts as shown, then tighten fasteners using a standard ratchet.

5b. Put the wings in the "Down" position. Install the heaters loosely, butt the wing heaters up to the center heaters and tighten fasteners.





5c. When re-installing the pilot lights, make sure they are **positioned as close as possible to the underside of the heaters** so that they are less vulnerable to being damaged.

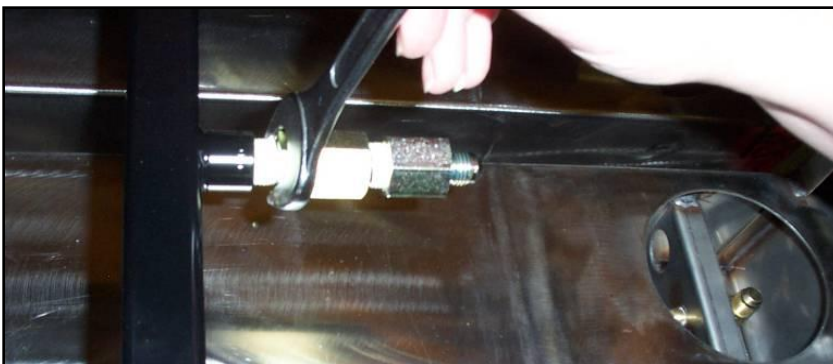
Installing the In-Line Filter Assembly:



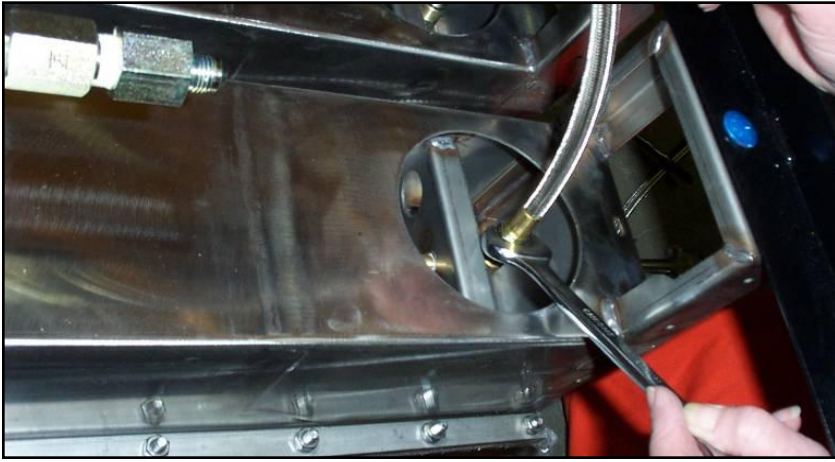
6. Unscrew the flare fittings from the manifold



7. When all fittings have been removed, carefully clean out all teflon sealant and other debris using a fine wire brush and thoroughly blow the manifold out with compressed air



8. Install the new Filter Assemblies



9. Install the new (shorter) 11" Braided Hoses. Start by installing and tightening the hose onto the Heater Nozzle assembly as shown



10. Then attach the other end of the hose to the Filter Assembly. **VERY IMPORTANT:** Use Compressed air and soapy water to check for leaks. Reseat and tighten fittings if necessary.

To clean out the filter: Loosen the Braided hose (in the same place as shown above) then open up the Filter Assembly (see detailed view previous page) and blow out any accumulated debris. Reinstall and check for leaks.



IMPORTANT:
New Operating Propane Pressure:

3rd Stage Regulator (under the hood) to regulate propane pressure to the heaters

The smaller nozzles require a slightly higher gas pressure to operate: Set the pressure regulator to **between 6 & 7 psi.**